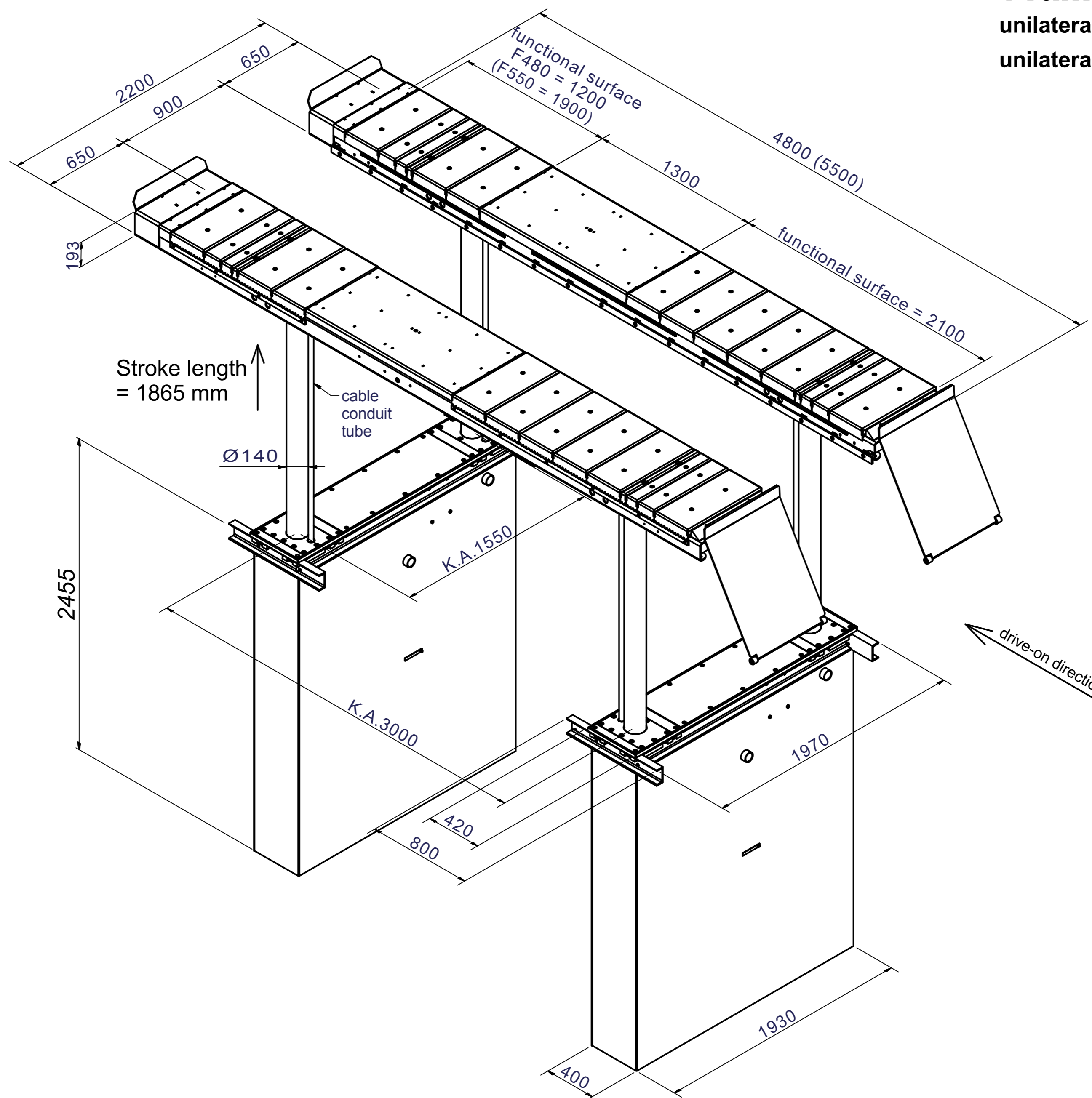


**4-ram lift 4.55 F480/F550**  
unilateral drive-on ramps,  
unilateral stoppers



Stroke length = 1865 mm

Ø140

cable conduit tube

K.A.1550

K.A.3000

1970

420

800

1930

400

drive-on direction

Dimension sketch incl. specifications of level for drive-over height.

Constructional changes are subject to modifications \* date 07. september, 2017