

Semi-scissor platform lift

HDS25-9000 Single

article no.: HDS2509000F02

Heavy duty scissor lift with 2 platforms, capacity 25/36 t, lifting stroke 1750 mm, Y-tec semi-scissors, length of platforms 9 m, 1 central power and operation unit.



specifications

article no.		HDS2509000F02
load support	load support	platforms
	capacity	25 t
	capacity with symmetrical load	36 t
	quantity of platforms	2
	length of platforms (mm)	9000 mm
	width of platforms (mm)	750 mm
	height of platforms (mm)	360 mm
	distance between platforms	1100 mm
	platform surface	smooth metal sheet
lifting height	lifting stroke effective	1750 mm
	lifting height / floor version	2105 mm
	lifting height / recessed version	1750 mm
speed	lifting time	90 sec.
	lowering time (under load)	90 sec.
drive	mode of drive	electro-hydraulic
	motor	AC voltage
	motor power (kW)	8.8 KW
power supply	type of power supply	mains supply
	electrical connection	400V/3Ph+N+PE/50Hz
	compressed air connection	6 bar
	fuse (Amps)	32 A
operation	mode of operation	1 central control unit
	control	electronic
	Softstart	X
regularisation	synchronisation	proportional valves, infinitely variable
load securing	load securing	hydraulic and mechanical
weight		6400 kg
protection class		IP65
floor load	quality of foundation	C20/25
surface treatment	type of surface treatment	powder coating
	colour	grey RAL7015



accessories



HDSF07-ST02

Electric sockets 230V



HDSF07-DL02

Pneumatic sockets



HDSF07-BL-LED06

6 LED lamps



HDSF07-BL-LED08

8 LED lamps



HDSF07-AS01

anti-skid surface R13



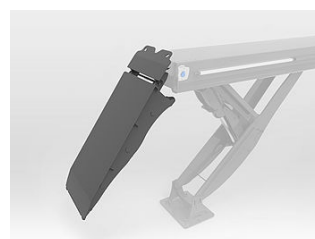
HDSF0713-235

2 ascending ramps, 2350 mm



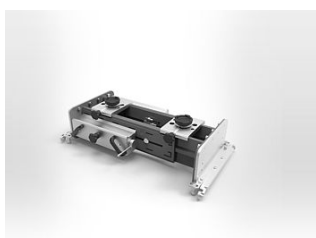
HDSF0713-330

2 ascending ramps, 3300 mm



HDSF0713-180H

2 ascending ramps, hanging,
1800 mm



HDSMHFL160-200-F07

jacking beam 16 t, pneumatic



HDSF07BA-09000

floor levelling for pits of plat-
forms



HDSF07FV-XX

Galvanizing



HDSF07DUROPLEX-XX

Special coating in addition to
galvanizing



HDSF07-SK01

2. control box in the washing
area

